



– together we empower each other

A map of the Faroe Islands, showing the archipelago in the North Atlantic. The islands are highlighted in green. A small inset map in the top left shows the location of the Faroe Islands within the North Atlantic. A larger inset map in the bottom left shows the islands in more detail. The background is a light gray map of Europe and the surrounding oceans.

# The Faroe Islands

Sovereign state within the Kingdom of Denmark

Home rule 1 April 1948

Further autonomy 29 July 2005

62°00'N 06°47'W

Official language is Faroese

Legislature Føroya Løgting

Total area 1,399 km<sup>2</sup> (540 sq mi)

Highest elevation 882 m (2,894 ft)

Population 53,752



Íslandsvegur 10 c  
100 Tórshavn  
Björg Dam, forkvinna  
Telefon: 21 14 28  
adhd@adhd.fo  
adhd.fo



Íslandsvegur 10 c  
100 Tórshavn  
Ann-Mari Jensen, forkvinna  
Telefon: 78 80 12  
alzheimer@alzheimer.fo  
alzheimer.fo  
facebook.com/Alzheimerfelag/



Íslandsvegur 10 c  
100 Tórshavn  
Jónrit Halling, forkvinna  
Telefon: 50 90 31  
formadurin@autisma.fo  
autisma.fo



FØROYA  
BLINDAFELAG  
Íslandsvegur 10 c  
100 Tórshavn  
Ruth Thomsen, forkvinna  
Telefon: 21 99 08  
ruth.thomsen@blind.dk



FØROYA  
PSORIASISFELAG  
Íslandsvegur 10 c  
100 Tórshavn  
Kathrina F. Hansen, forkvinna  
Telefon: 50 63 63  
joensen.kathrina@gmail.com  
psoriasis.fo



Íslandsvegur 10 c  
100 Tórshavn  
Anna Petersen, forkvinna  
Telefon: 28 71 28 mikkudag frá  
kl. 16-18  
gikt@gikt.fo  
gikt.fo



CØLIAKIFELAG FØROYA  
Íslandsvegur 10c  
100 Tórshavn  
Sonja Tausen, forkvinna  
Telefon: 26 86 83  
coliakif@coliakif.fo  
coliakif.fo



COLITIS-CROHN FØROYAR  
Íslandsvegur 10c  
100 Tórshavn  
Óluva Hermansen, forkvinna  
Telefon: 51 33 85  
ccf@ccf.fo  
ccf.fo



Íslandsvegur 10 c  
100 Tórshavn  
Katrin Jacobæus, forkvinna  
Telefon: 50 38 60  
cp@cp.fo  
cp.fo



HEILAFELAGIÐ  
Íslandsvegur 10 c  
100 Tórshavn  
Anna Petersen, forkvinna  
Telefon: 28 56 40  
heilaf@olivant.fo



Hjartafelagið  
Postboks 3120  
110 Tórshavn  
Eydna Joensen, forkvinna  
Telefon: 31 32 38  
eydnajm@gmail.fo  
hjartafelag.fo



PARASPORT  
FØROYAR  
Gundadalur 2  
100 Tórshavn  
Petur Elias Petersen, formaður  
Telefon: 54 86 70  
parasport@parasport.fo  
parasport.fo



Deafafelag Føroya  
Íslandsvegur 10c  
100 Tórshavn  
Maria Ellefsen, forkvinna  
Telefon: 31 75 97  
deaf@deaf.fo  
deaf.fo



Diabetesfelagið  
Íslandsvegur 10c  
100 Tórshavn  
May-Britt Skoradal, forkvinna  
Telefon: 29 22 53  
maybrittskoradal@gmail.com  
diabetes.fo



epilepsifelag  
føroya  
Íslandsvegur 10 c  
100 Tórshavn  
Randfríð Sørensen, forkvinna  
Telefon: 31 39 78  
rs@januar.fo  
epilepsi.fo



javni  
Postboks 1133  
110 Tórshavn  
Fia Petersen, forkvinna  
Telefon: 20 80 90  
javni@javni.fo  
javni.fo



NÝRAFELAGIÐ  
Íslandsvegur 10 c  
100 Tórshavn  
Jórun Karolina Høgnesen, forkvinna  
Telefon: 21 54 50  
jorunh@olivant.fo



PARKINSONFELAGIÐ  
Íslandsvegur 10 c  
100 Tórshavn  
John William Joensen, formaður  
Telefon: 22 96 82  
parkinson.fo@gmail.com  
parkinson.fo



HOYR  
Íslandsvegur 10c  
100 Tórshavn  
Ása Olsen, forkvinna  
Telefon: 51 93 82  
hoyn@olivant.fo  
hoyn.fo



lesa.fo  
Tróndargøta 40  
100 Tórshavn  
Anne-Karin Kjeld, forkvinna  
Telefon: 25 39 22  
lesa@lesa.fo  
lesa.fo



FØROYA ASTMA/  
ALLERGIFELAG  
Íslandsvegur 10 c  
100 Tórshavn  
Bozena Rasmussen, forkvinna  
Telefon: 51 23 78  
bozena@kallnet.fo  
Ingrid Henriksen, næstforkvinna  
Telefon 228079



SCLEROSUFELAGIÐ  
Biskupstorg 7.1 H  
700 Klaksvík  
Hallur Thomsen, formaður  
Telefon: 59 87 83  
sclerosufelag@sclerosufelag.fo  
sclerosufelag.fo



SINNISBATI  
Postboks 1184  
110 Tórshavn  
Súsanna Olsen, forkvinna  
Telefon: 59 79 13  
sinnisbati@sinnisbati.fo  
sinnisbati.fo



STOFFSKIFTISFELAGIÐ  
Landavegur 65  
100 Tórshavn  
Anna Dahl-Olsen, forkvinna  
Telefon: 31 91 61  
stoffskifti@stoffskifti.fo  
stoffskifti.fo



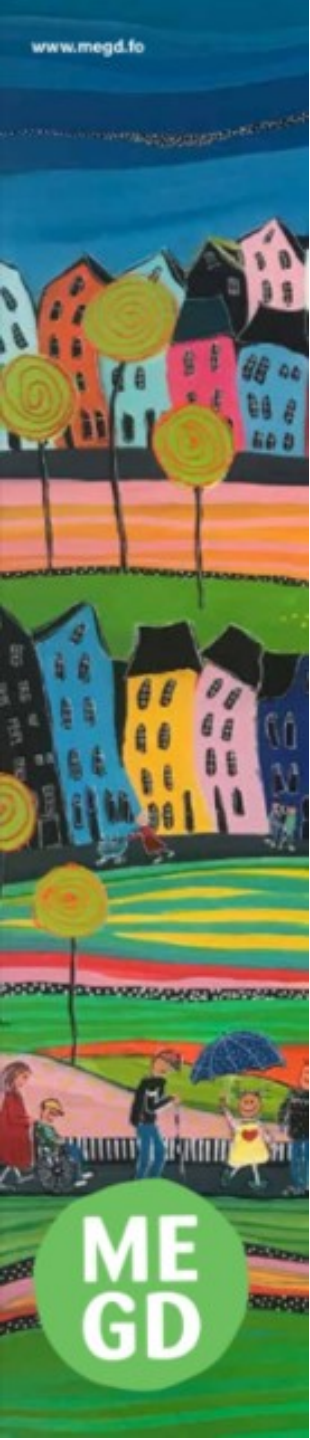
MEGD was founded in 1981 and has from the beginning fought to become a recognized political actor in the Faroese democratic political system

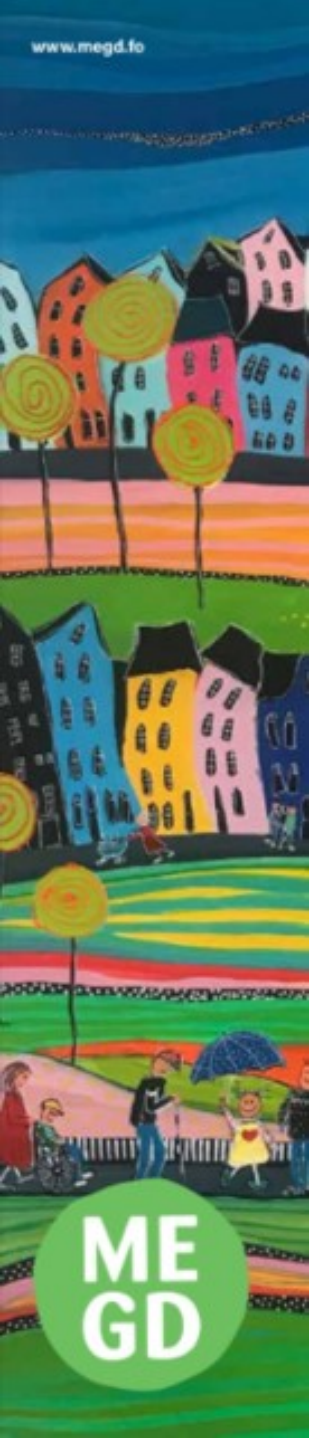
## Mission

Through political influence and policymaking, MEGD seeks to constantly improve conditions for people with disabilities in the Faroe Islands by supporting individuals and their associated organizations

## Vision

Based on the UN Convention on the Rights of Persons with Disabilities, MEGD aims to secure equal rights for people with disabilities as part of an inclusive society





The umbrella has 24 member organizations

The purpose of the organization is:

- to work to promote cooperation between the member organizations
- to work to promote and support the interests of people with disabilities
- to participate in international cooperation
- to work for promotion in order to have an influence and to be heard in the cases concerning the disabled



- In 2009 The Faroe Islands ratified the convention In January 2014 sent first shadow report to the UN together with the Danish umbrella
- In October 2014 Føroya Landsstýri received the final conclusions from the UN committee
- In 2019 MEGD, together with the member organizations, sent “List of Issues” to the UN
- In April 2019 Føroya Landsstýri sent their rapport to UN
- Now...

Follow the political life and comment on the political discussion, as it concerns the disabled UN Convention and Shadow Report

Working on the implementation of the UN Convention

MEGD receives all bills for hearing, both new laws and amendment of laws.

MEGD must ensure that all material consulted complies with the UN Convention





Research project on the well-being of people on early retirement

Same research as in 2007

A total of 1762 people on early retirement

3.3% of the population 18-66 years

In 2007 the same figure was 8%

Theory - Erik Allardt

- to have - material, financial and accessibility to an active life
- to love - social relationships
- to be - identity, dignity, to be able to influence society and realize personal desires

Poplo on early retirement are at home a lot, are not as active as others and use their home as their safe base.





## Improvements

- Social law
- Accessibility
- Amendments to the Pension's Act
- The Tax Act amended
- Work matters
- Important to have their own car - mobility
- Few say that loneliness is a problem

## Challenges

- The family helps too much
- Missing leisure activities
- Information regarding services, education and rights
- Communication with the social administration
- Systems work slowly
- Rehabilitation



## Topics we (still) work with

- The Ministry of Social Affairs has the task of coordinating the implementation of the convention
- Independent function to promote, protect and monitor the implementation of the Convention (Spokesperson)
- Coordinating unit - inter-ministerial committee of officials
- Action plan in the field of disability
- More housing for people with disabilities
- Law to protect people with disabilities on strike
- Waiting lists for assessment and treatment
- Accessibility - buildings, websites, digital services, digital identity, school, education, work ...
- New social law implemented
- Communication center - collective advice in one place
- Discrimination law outside the labor market





Change how you see and see how you change







LUKKA



The four key criteria are:

- Accessibility – easy access not only into the restaurant but also inside, e.g. access to buffet, menu and payment.
- Toilets – is the toilet easily accessible, spacious and can it be used by people with limited abilities?
- Allergy-friendly foods – does the menu include options for people with allergies such as celiac disease or lactose intolerance?
- Parking – does the restaurant have good disabled parking facilities?