



HUCH Hospital Area

HOSPITAL DISTRICT OF HELSINKI AND UUSIMAA

Nordic experience — Good Practice in Provision of Assistive Technologies to Municipality

March 5 2008

Radisson SAS hotel, Tallinn

Nuutti Hiltunen

HOSPITAL DISTRICT OF HELSINKI AND UUSIMAA

Helsinki University Central Hospital

Children's Castle

Assistive Technology Centre



HUCH Hospital Area

HOSPITAL DISTRICT OF HELSINKI AND UUSIMAA

Children's Castle



- Children's Castle started out as a shelter for unmarried mothers
- A nursing school was established in Children's Castle in the 1920s
- The current Children's Castle building was opened in 1948
- Designed by three architects: Elsi Borg, Otto Flodin and Olavi Sortta
- Children's Castle provides services in Child Neurology, Child Psychiatry and Adolescent Psychiatry



Health care in Finland

- Every Finn has a right to health care regardless of his/her ability to pay, social status, or place of residence
- 450 local authority municipalities provide primary health care services
- The municipalities have relative freedom to organise their health care services to suit the local circumstances and meet the needs of the patients
- Municipalities and individual patients can also purchase services from the private sector



Specialised medical care

- Each municipality belongs to one of Finland's 20 hospital districts, which are responsible for providing specialised medical care for the population
- The task of hospital districts is to provide and coordinate public hospital care within their respective areas
- Each hospital district has a central hospital. Five of these central hospitals are university hospitals
- Hospital District of Helsinki and Uusimaa (HUS):
 - is the largest hospital district in Finland
 - serves 1.5 million citizens
 - comprises 23 hospitals
- Patient fees: € 22 per outpatient visit, € 26 per hospital day



HUCH Hospital Area

HOSPITAL DISTRICT OF HELSINKI AND UUSIMAA

HUS Hospital Areas and Hospitals

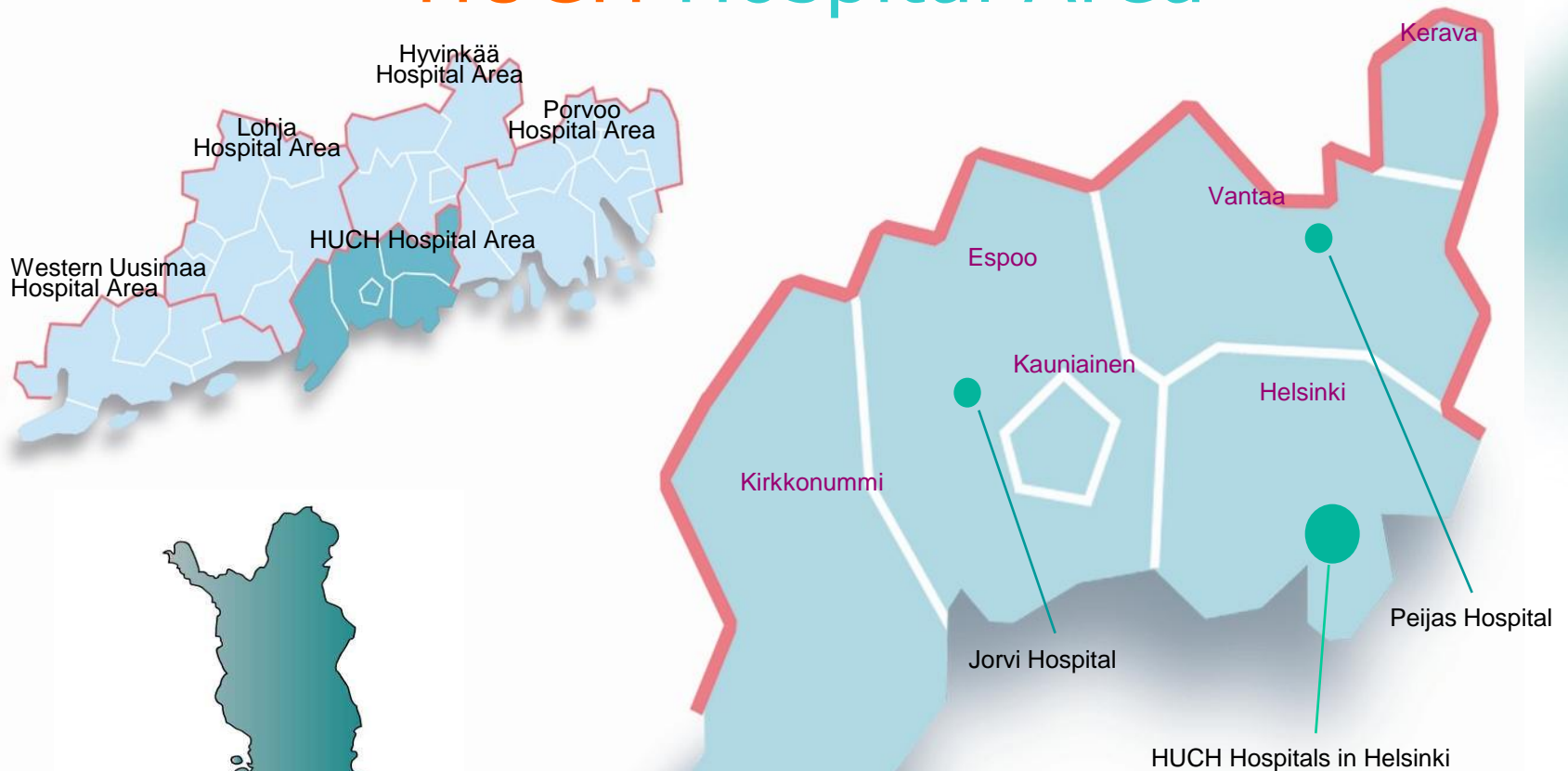




HUCH Hospital Area

HOSPITAL DISTRICT OF HELSINKI AND UUSIMAA

HUCH Hospital Area



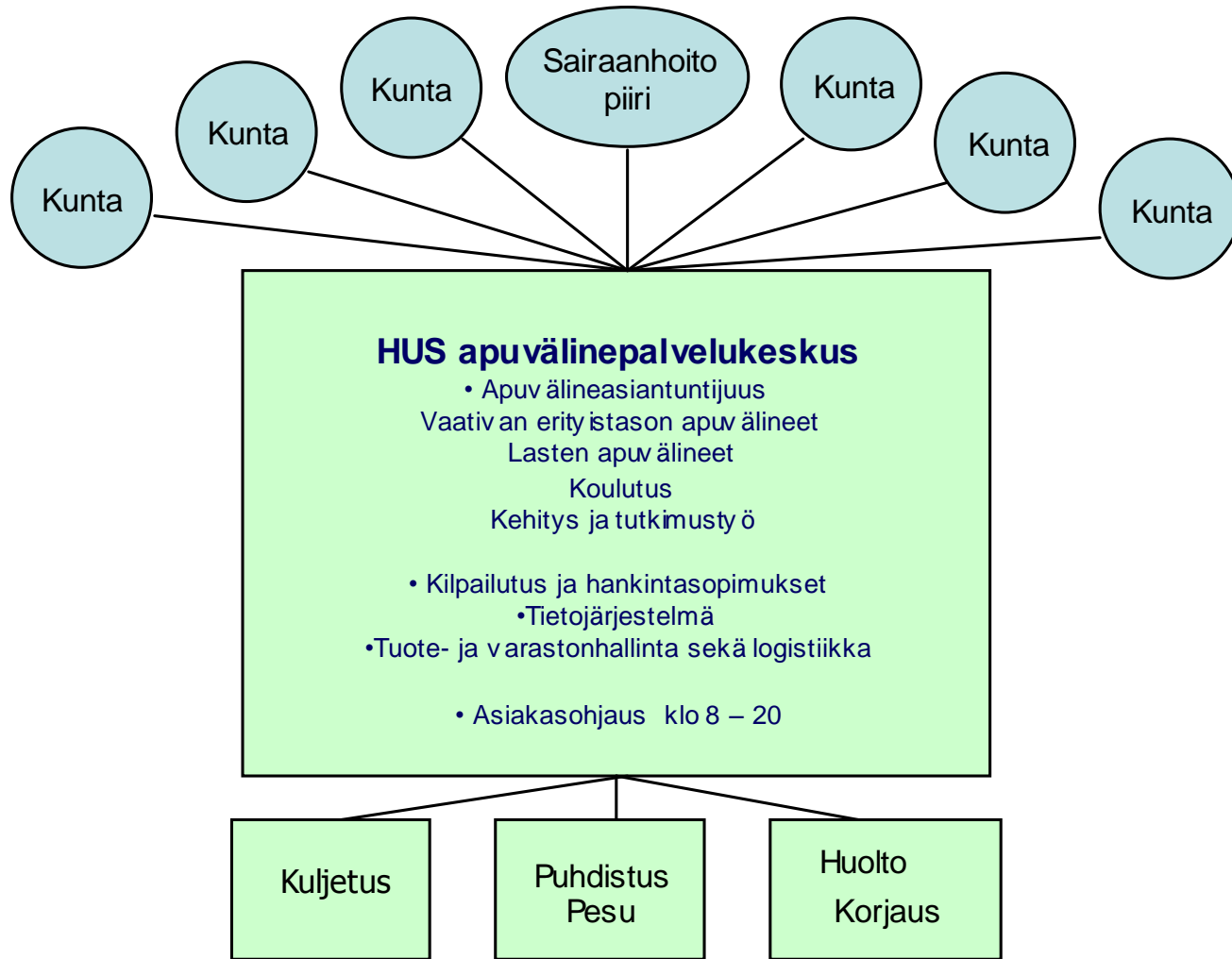
Children and adolescents aged 0 to 18 years:

- Helsinki: 101 809
- Jorvi area: 71 381
- Peijas area: 53 487

(on 31 December 2006)



The Plan



Powered Wheelchair



HUCH Hospital Area
HOSPITAL DISTRICT OF HELSINKI AND UUSIMAA





Powered Wheelchair



HUCH Hospital Area
HOSPITAL DISTRICT OF HELSINKI AND UUSIMAA







Thank You

*I use a wheelchair — not
because I cannot walk, but in
order to move around*

