



PRIO

Marta Bivand Erdal

Recent migration to Norway: Integration, diversity and implications for nation and state

*Immigration to the Nordic-Baltic Region:
New Challenges for Nation States in the Age
of Migration – 31 March 2017*

Independent • International • Interdisciplinary

Peace Research Institute Oslo

Migration, transnationalism, diversity

- **Remittances from immigrants in Norway** (www.prio.no/rin)
- **Possibilities and realities of return migration** (www.prio.org/premig)
- **Negotiating the nation: Implications of ethnic and religious diversity for national identity** (www.prio.org/nation)
- **Governing and Experiencing citizenship in multicultural Scandinavia** (www.prio.org/govcit)

Recent migration to Norway

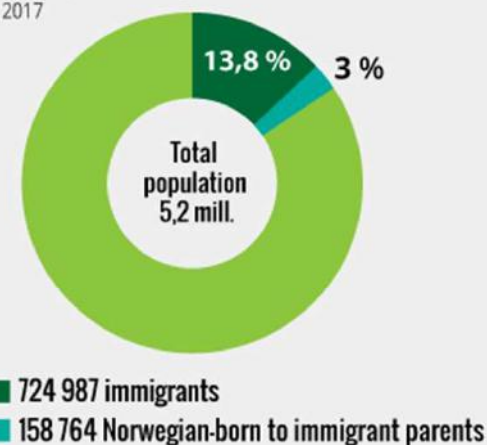
Where do the immigrants come from?

1 January 2017



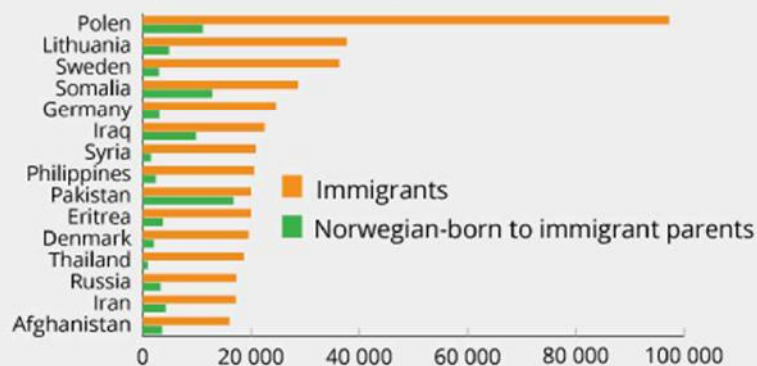
How many immigrants are there?

1 January 2017



The 15 largest countries

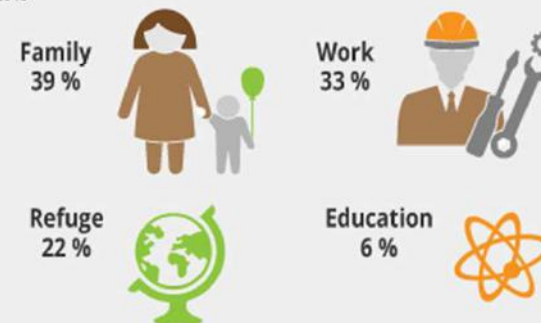
1 January 2017



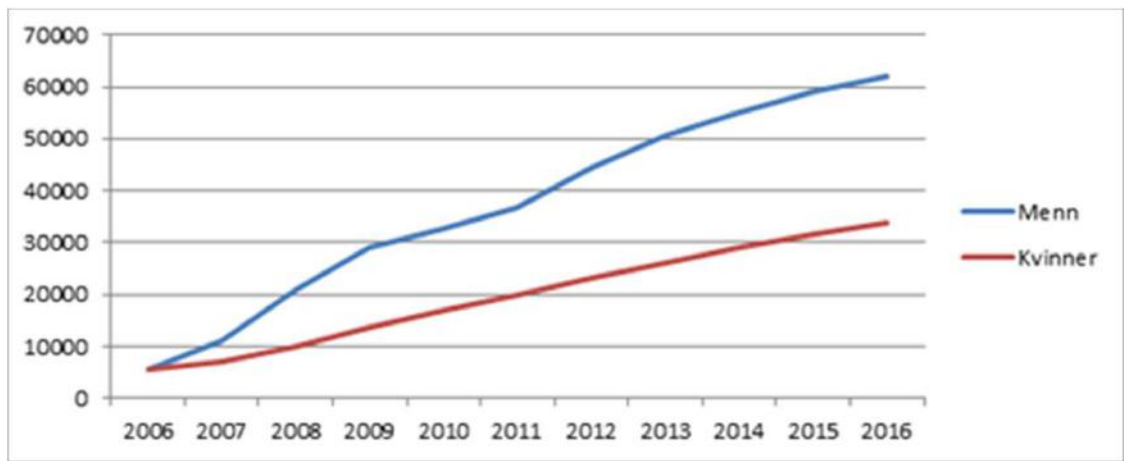
Why do immigrants come to Norway?

Resident non-nordic citizens immigrated after 1989.

2015



Recent migration to Norway – Polish migrants



Recent migration to Norway

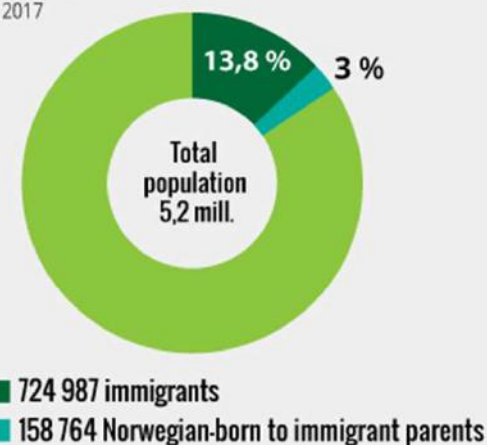
Where do the immigrants come from?

1 January 2017



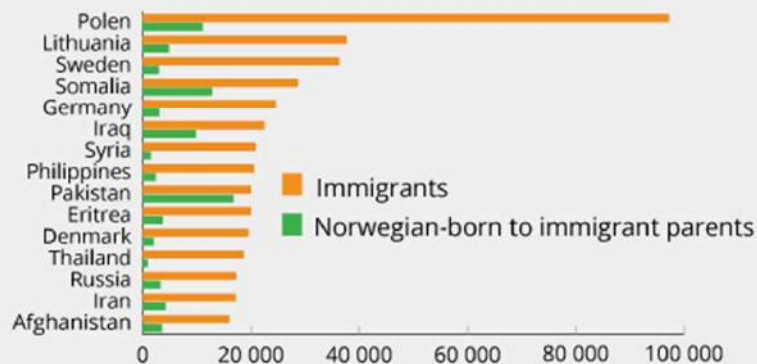
How many immigrants are there?

1 January 2017



The 15 largest countries

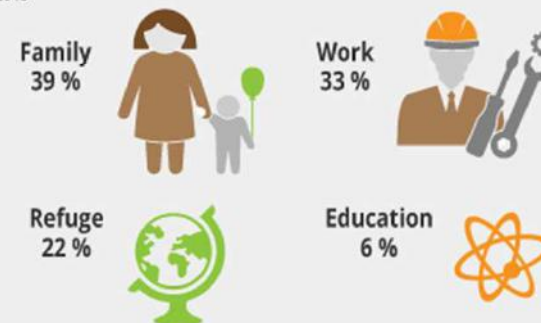
1 January 2017



Why do immigrants come to Norway?

Resident non-nordic citizens immigrated after 1989.

2015



Integration

- Employment
 - *Skills*
 - *Training*
 - *Qualifications*
- Culture
 - *Language*
 - *Norms & expectations*
 - *Customs*

State integrationism

Empirical patterns

Experiences

Diversity

- 'a homogenous past'?
 - *Indigenous Sami population*
 - *Constitution boundaries drawn*
 - *Regional*
 - ...

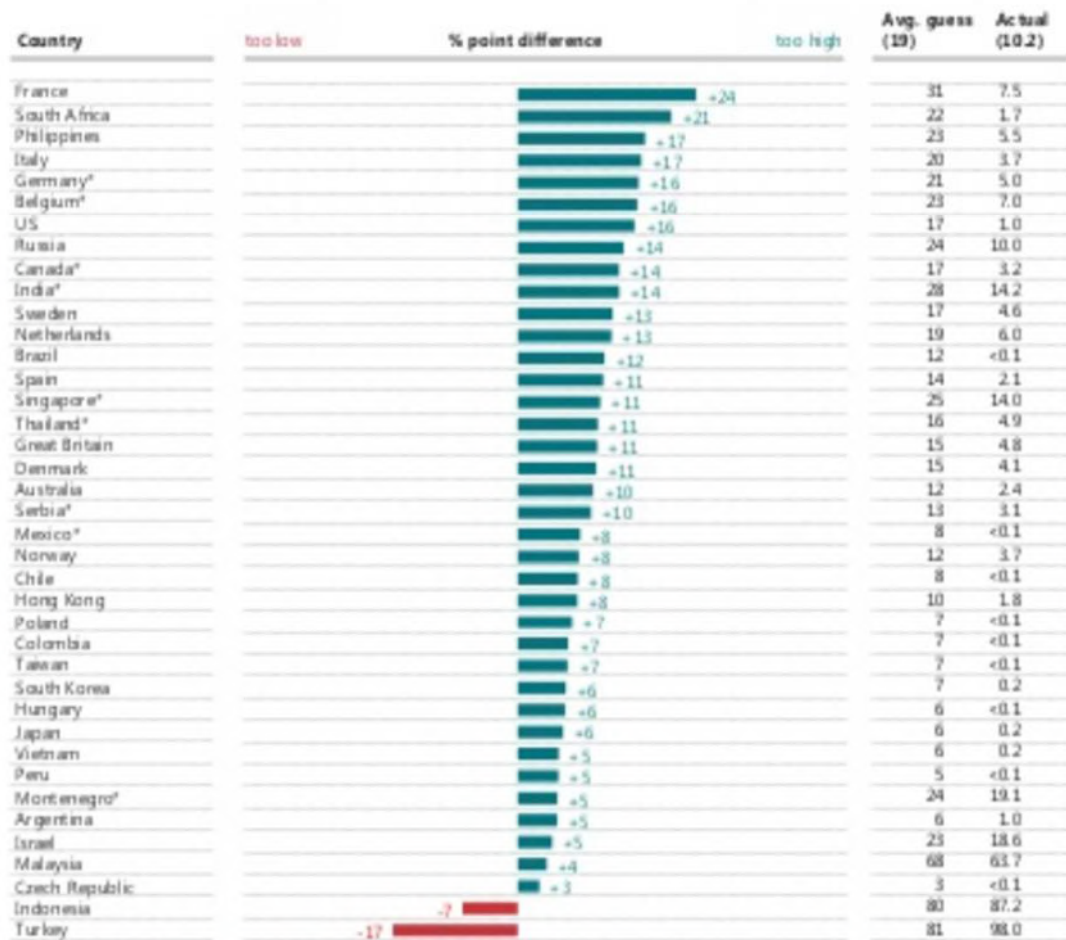


Perceptions of migration and diversity



Out of every 100 people, about how many do you think are Muslim?

Nearly all countries overestimate their Muslim population, and many are extraordinarily wrong.



The 'actual' data for this question is largely from Pew Research Center. Instances where the 'actual' data comes from another source are indicated with an asterisk (*). Please see <http://perceptions.com/> for full details of all sources.

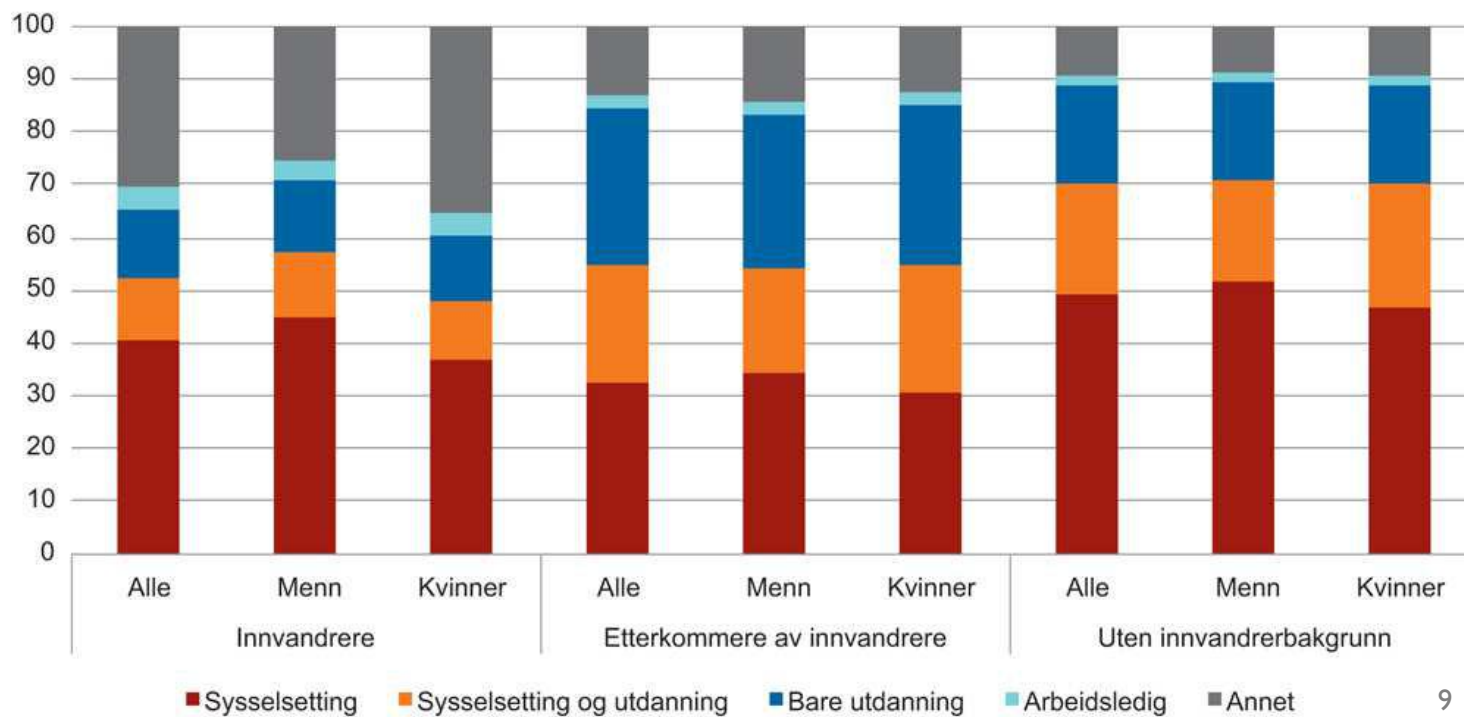
Implications for the state

NOU

Norges offentlige utredninger 2017:2

Integrasjon og tillit

Langsiktige konsekvenser av høy innvandring



Implications for the nation

Hva vil det si å være norsk i 2015?



Oppgave:

Skriv en tekst hvor du formidler egne tanker om hva det vil si å være norsk i 2015.

Ta utgangspunkt i dine egne erfaringer og i spørsmålene under:

- Hvem er det som er norsk – og hvem er ikke norsk?
- Kan man bli norsk?
- Er det i dine øyne noen sammenheng mellom utseende og norskhet?
- Er det noen sammenheng mellom tro og livssyn og det å være norsk?

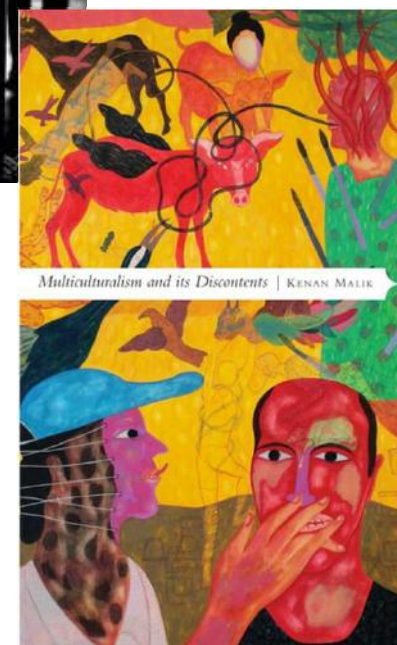
Teksten skal være på ca. 2-3 sider.

- Who counts as a national?
- What kind of time-frame?

Studien blir meldt til Personvernombudet for forskning, Norsk samfunnsvitenskapelig datatjeneste AS.

Migration related diversity and the nation-state

- Implications for the nation and for the state
 - *Related but distinct*
- Temporal perspectives
 - *Short-term vs. long-term*
- Political paradoxes
 - *Which common good?*





Thank you



marta@prio.org

www.prio.org/staff/marta