

The "Work First Vejle" Approach to Integration of Refugees

Experiences from Vejle Municipality

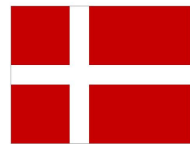


Christoffer Melson, Chairman of the Labour Market Committee

About us



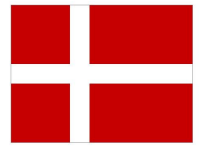
Denmark
Population: 5.707.251



Veje Municipality
• Population: 110.471
• The country's sixth largest municipality



The Danish state



UDLÆNDINGESTYRELSEN
DANISH IMMIGRATION SERVICE



- Houses asylum seekers in accommodation centres



- Covers asylum seekers' expenses at the centres

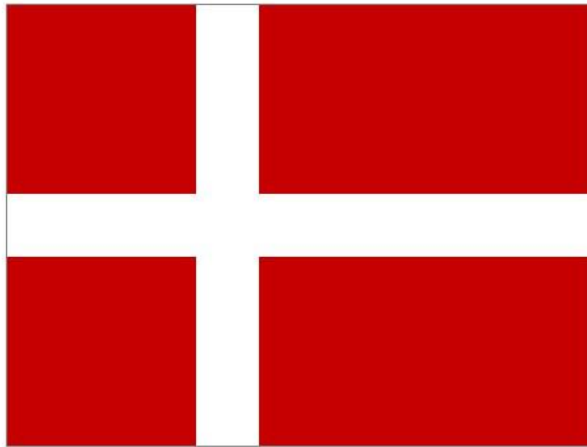
When asylum has been granted

Responsibility

From state



To municipality



The municipality



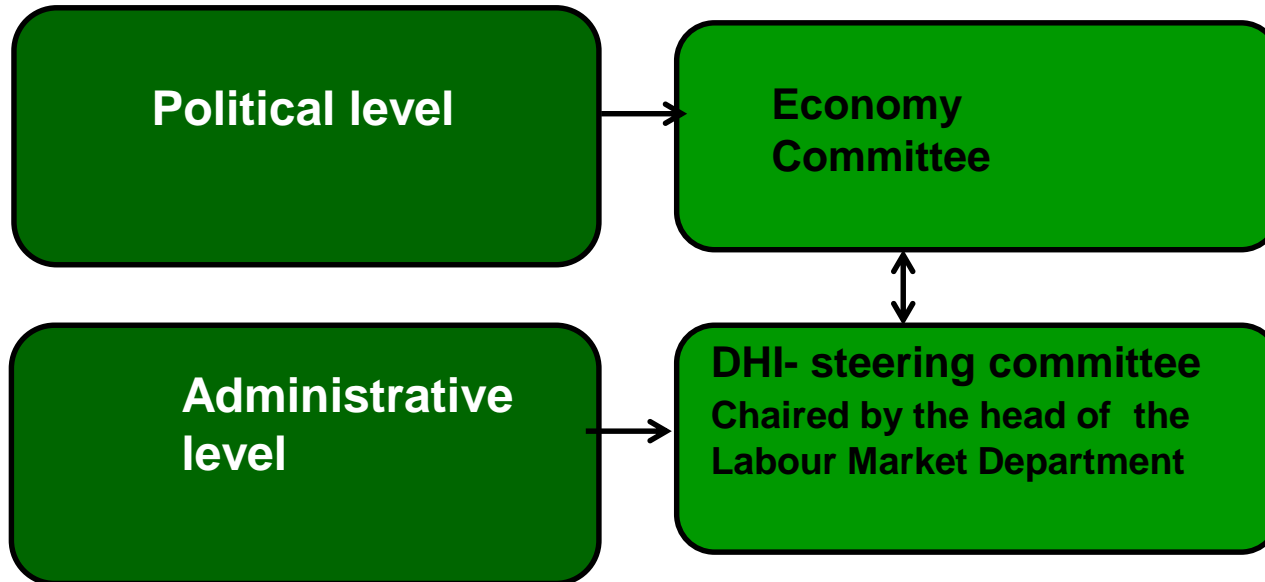
- Organises a mandatory three-year integration programme



- Provides housing
- Assists with various practical matters



Organisation of Vejle Municipality's integration effort

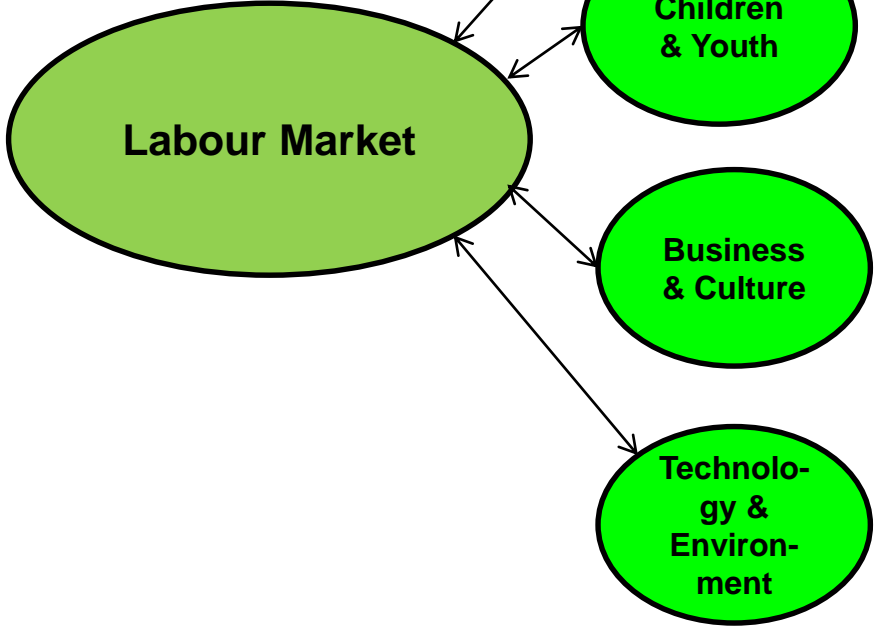


Organisation of Vejle Municipality's integration effort



Goals

1. _____
2. _____
3. _____



Refugees must:

- enter a training programme at a work place as soon as possible (an "Internship")
- choose sectors that offer realistic job opportunities
- qualify for minimum wage employment by the end of the three-year integration period

Work First Vejle sectors – where the jobs are



Retail



Cleaning services



Kitchen and food services



Food industry



Nursing and care



Warehouse

Interdisciplinary skills – including language

The sectors are characterised by:

- many job openings every year
- not requiring high skill levels
- an ability to accommodate employees with different backgrounds
- experience with foreign employees

The Work First Vejle programme



- A continuous process
- Tailor-made for every individual
- Training programme at a work place ("Internship")
- Language lessons
- Duration: from six months to three years

New approach to integration in Vejle Municipality



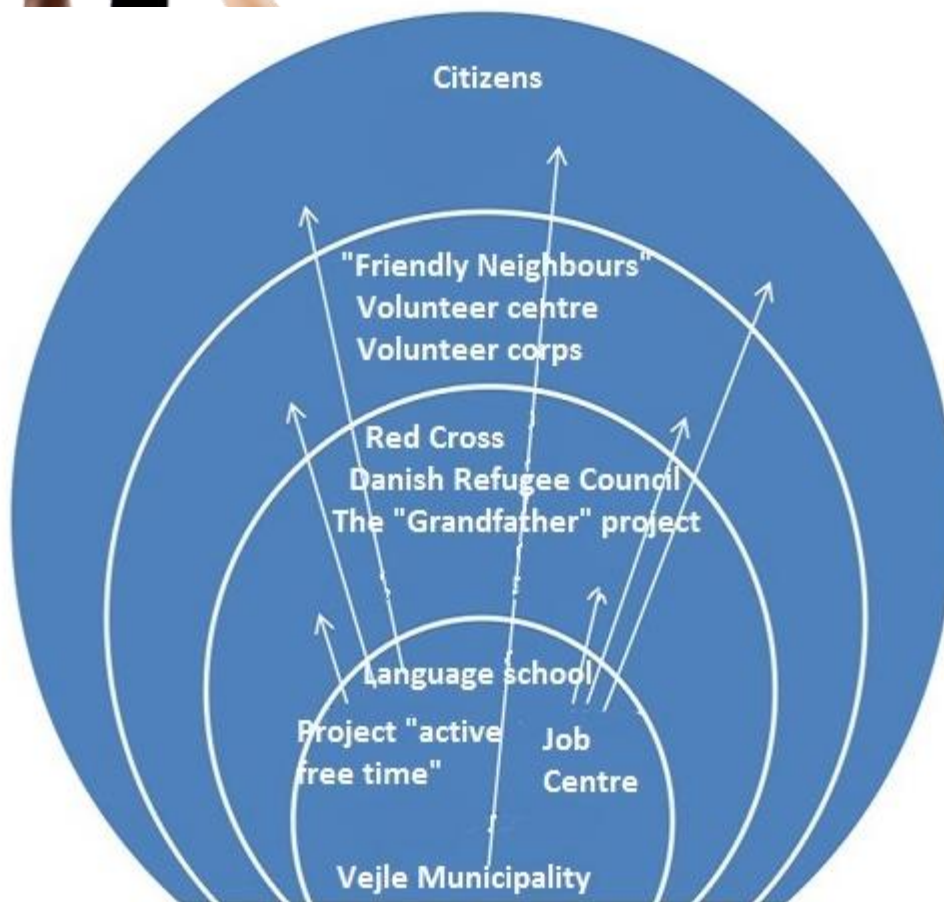
Which sector
would you
like to work



must
one of
ctors!



Volunteers Needed!



Vejle Municipality's Integration effort in numbers



	2014	2015	2016
Refugees	117	221	349
Family reunified persons	113	130	151

Cases concerning integration account for

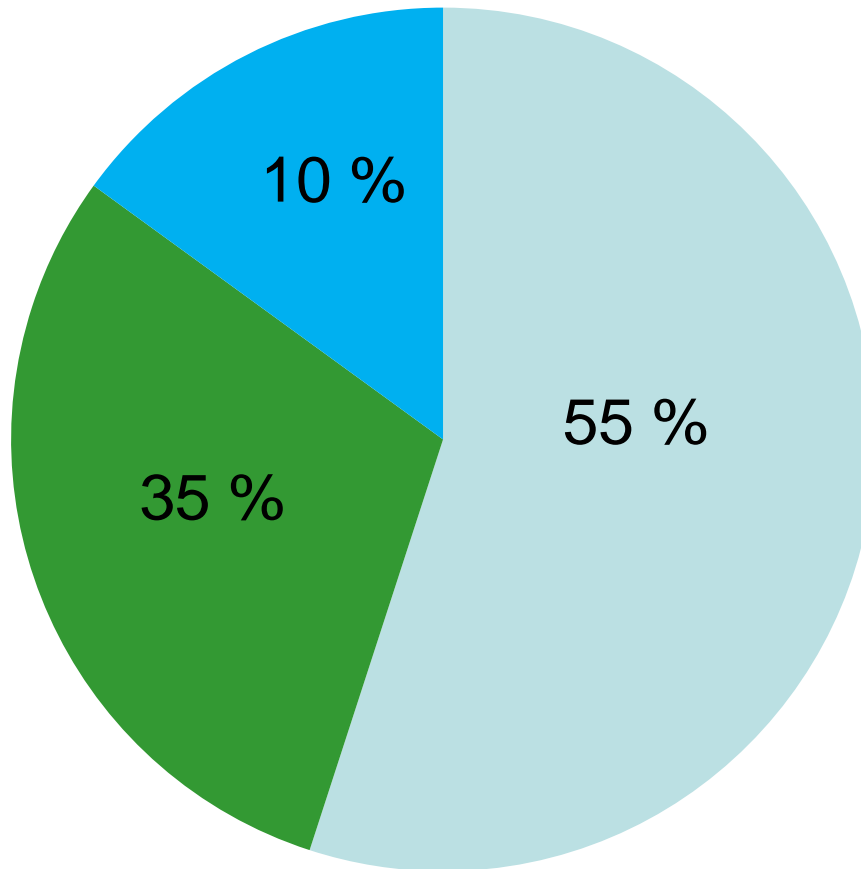
4%

of the Labour Market
Department's workload

9%

of the Labour Market
Department's gross
expenditures

Distribution between categories



-  Work First Vejle programme
-  Education
-  Sick leave / maternity leave



Self-supporting after the three-year
integration programme

In Veje
Municipality

45 %

In Denmark

35 %

**THANKS
FOR
LISTENING**

