

Engagement of grassroots societies in emergency reception and integration work

Anna Buzaeva 27.5.2022

Contents

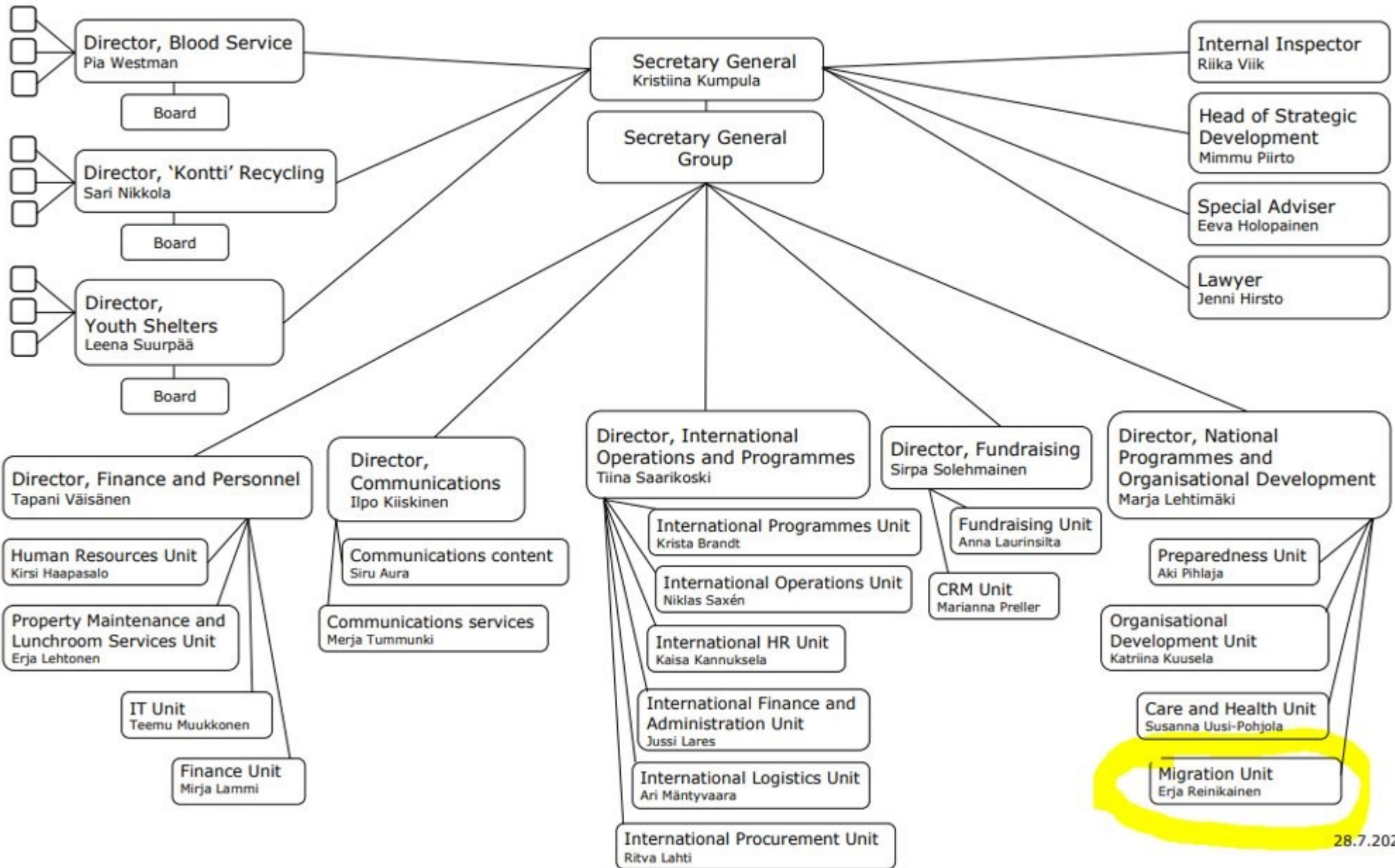
1. The Finnish Red Cross
2. Migration Work of the Finnish Red Cross
3. Reception of asylum seekers
4. Volunteers supporting integration

My work experience in the Finnish Red Cross

- 2007- 2015 Development Officer for Multicultural Activities
- 2016 – 2017 Manager of the Kouvola Reception Center
- 2018-2020 Development Officer for Multicultural Activities
- 2019 Deputy Executive Director of the FCR Southeast District
- 2021- Expert, reception of Asylum seekers



1. The Finnish Red Cross



Headquarters
12 districts
~442 branches

2. Migration Work of the Finnish Red Cross

Migration Work of the Finnish Red Cross

- Support for integration
- Reception of resettled refugees and asylum seekers
- Preparedness of large influx of asylum seekers
- Restoring Family Links: tracing and family reunification
- Support for undocumented migrants
- Support and protection for detainees with foreign background
- Detention monitoring – not started yet
- Protection in humanitarian work
- Work against racism and promotion of equality



3. Reception of asylum seekers

Reception of asylum seekers

- Every person has the right to seek asylum.
- [The criteria for asylum](#) are defined in law and international agreements
- The Finnish Red Cross supports the authorities in [receiving](#) asylum seekers.
- The Finnish Red Cross establishes, maintains and closes reception centres across Finland **commissioned by the Finnish Immigration Service.**
- [The reception centre operations are funded by the](#) Finnish Immigration Service. These operations do not use funds donated to the Finnish Red Cross, e.g. from the Disaster Relief Fund.
- [The Finnish Immigration Service](#) is responsible for processing the asylum and temporary protection applications and making decisions.



Reception of asylum seekers

- **The Finnish Red Cross maintains reception centres in different parts of Finland.**
- **12 reception centres maintained by FRC in February 2022 -> now 41!**
- **NEW: Temporary protection**
- Reception centres are intended for asylum seekers whose applications are still being processed or who are waiting to move to a municipality or to be returned to their home country. The centres provide asylum seekers with [services](#) intended to ensure their well-being and income.
- The reception centres take care of e.g. asylum seeker accommodation and necessary and urgent social and health services. The care personnel at the reception centre assesses each asylum seeker's need for social and health services.
- The Finnish Red Cross aims to support the integration of asylum seekers starting from the first day in the country when the motivation to learn the Finnish language and culture is at its height.
- The reception centres also map the competence and possible training and employment wishes of every asylum seeker.



4. Volunteers supporting integration

Volunteers supporting integration

Help with
homework



Refugee tent -
Advocacy work
for refugees



Sports clubs etc



Camps and field trips



Friend activities



Help at home



Language clubs



International clubs



Volunteer activities continue..

Support in reception
of resettled refugees



Support for
undocumented
migrants



PSS visits in detention
centres



Support and free-time
activities in reception
centres



Activities against racism



Volunteer training



21 000 volunteers
altogether in FRC,
1 800 supporting
integration

Additional information (in English)

- Fact sheet of the Finnish Red Cross https://rednet.punainenristi.fi/system/files/page/Fact-Sheet_SPR_p%C3%A4ivitetty07062021_EN.pdf
-
- Strategic Programme 2021-2023 https://rednet.punainenristi.fi/system/files/branch/Strategic%20Programme%202021-2023_ENG.pdf

” It would be wonderful to find a Finnish friend for each new immigrant!”





Thank you

Lisää teksti tai jätä pois