



artscape

Vilnius  
LITHUANIA





artscape

Open, tolerant and enabled society which is strengthened by  
transformative artistic processes and synergy of  
communities.

Is art pointless?











GOAL



START



GOAL



START

I will not even do it



I will try it



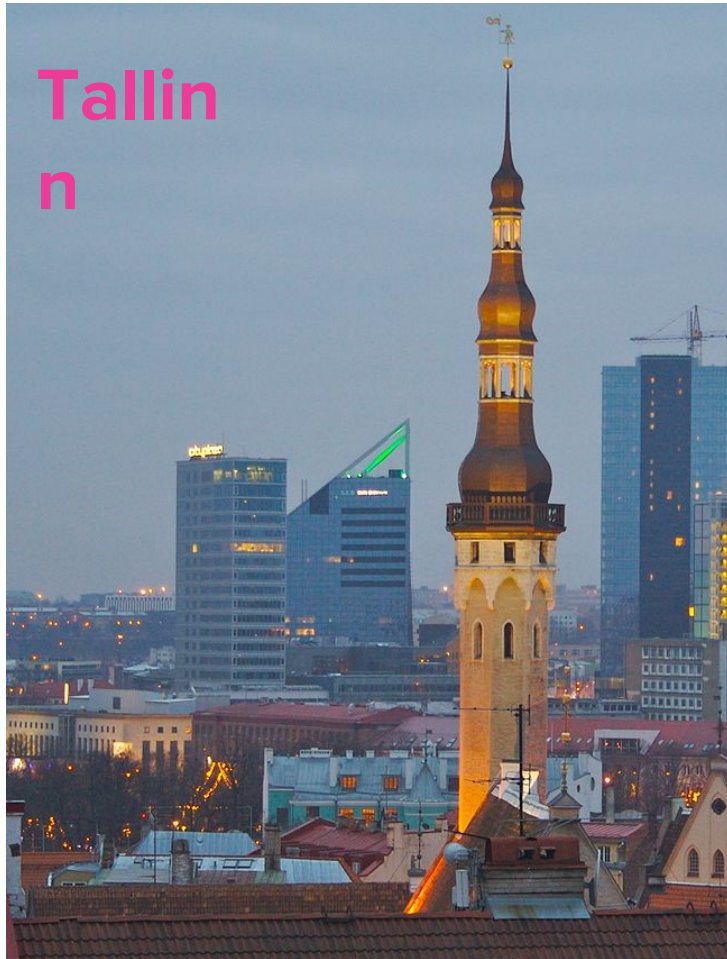
I will try it



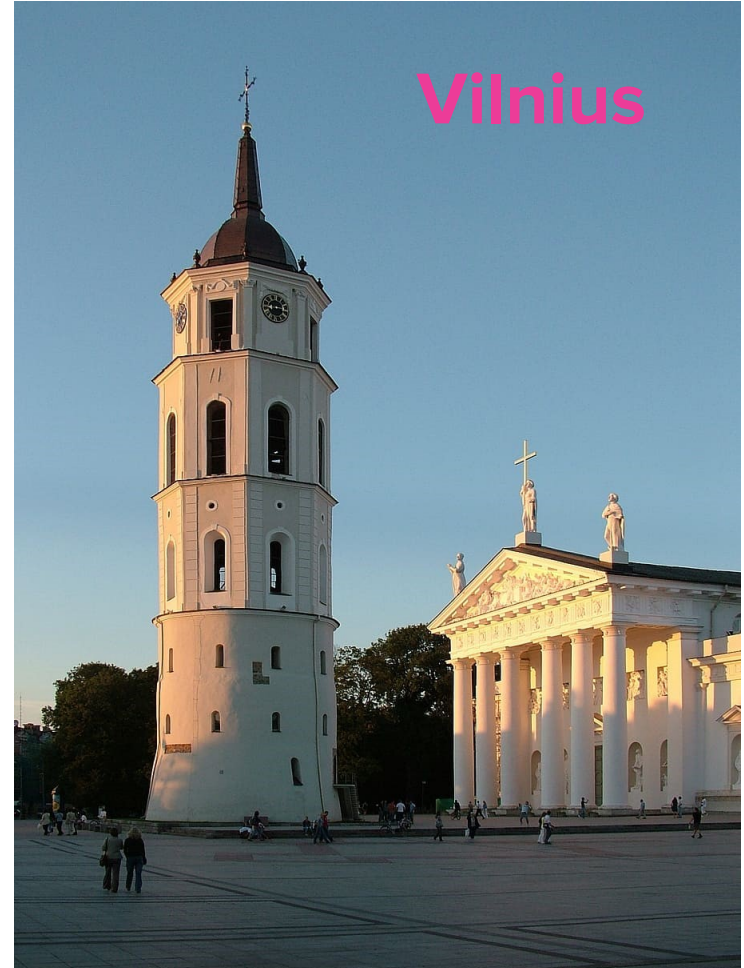
I will do it

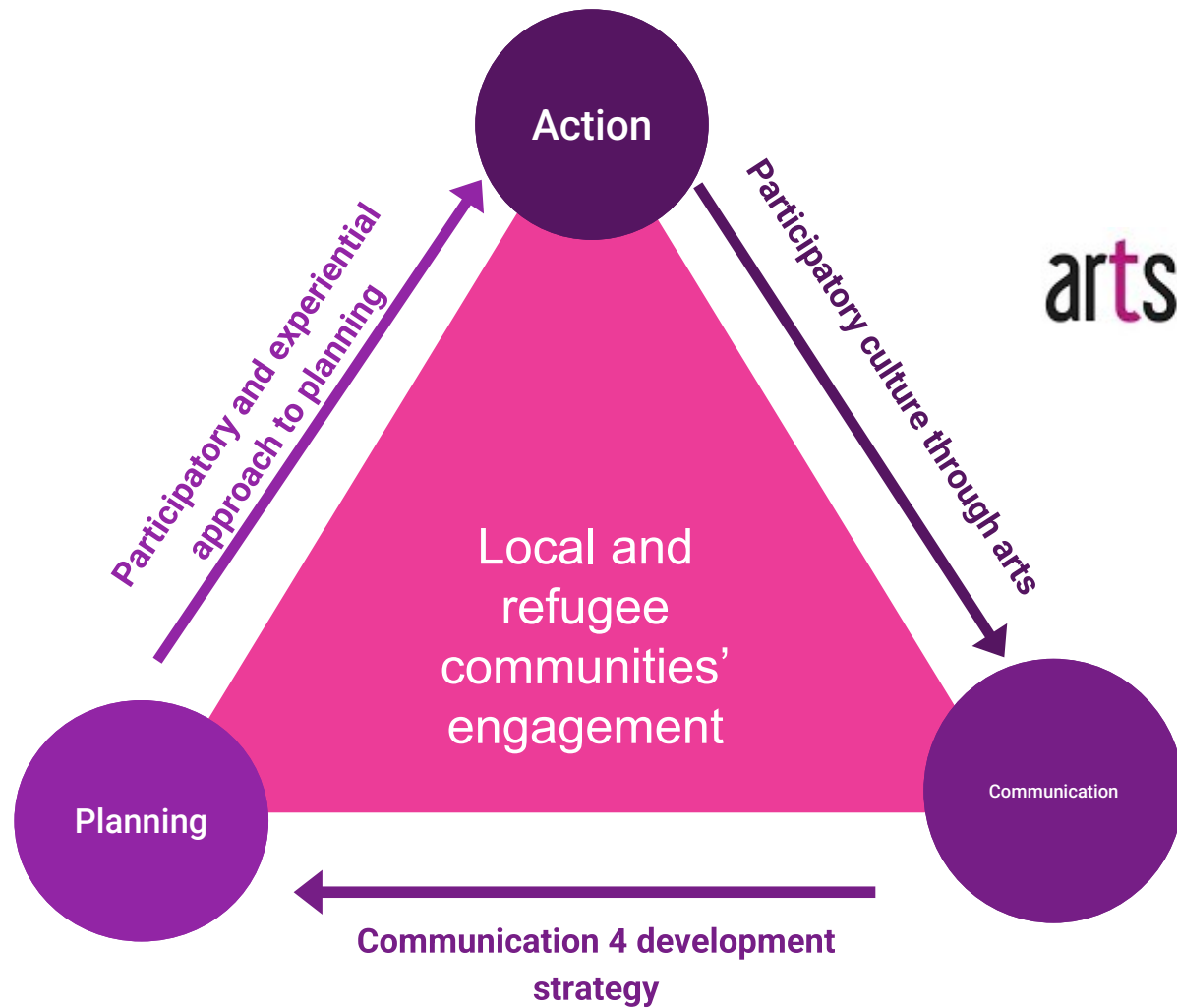


Tallin  
n



Vilnius



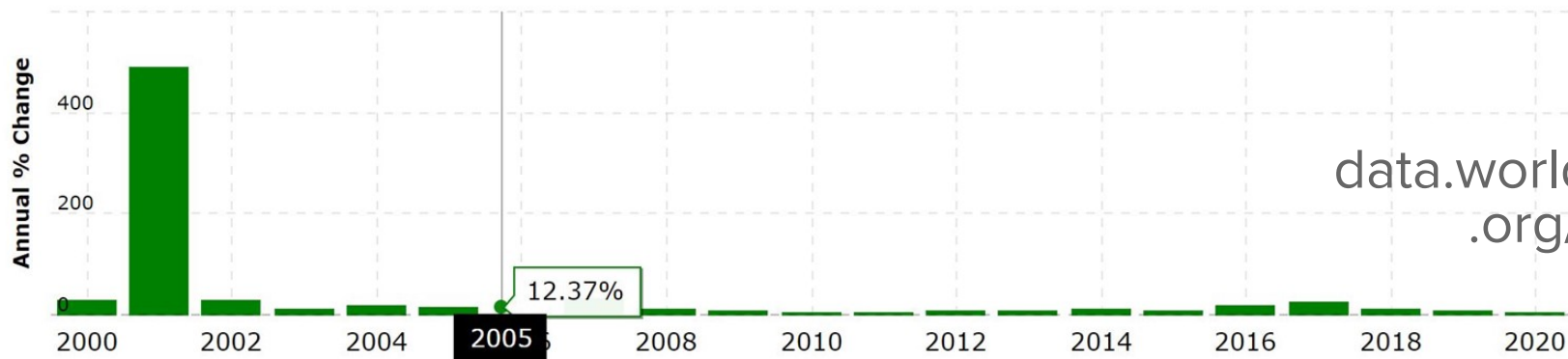
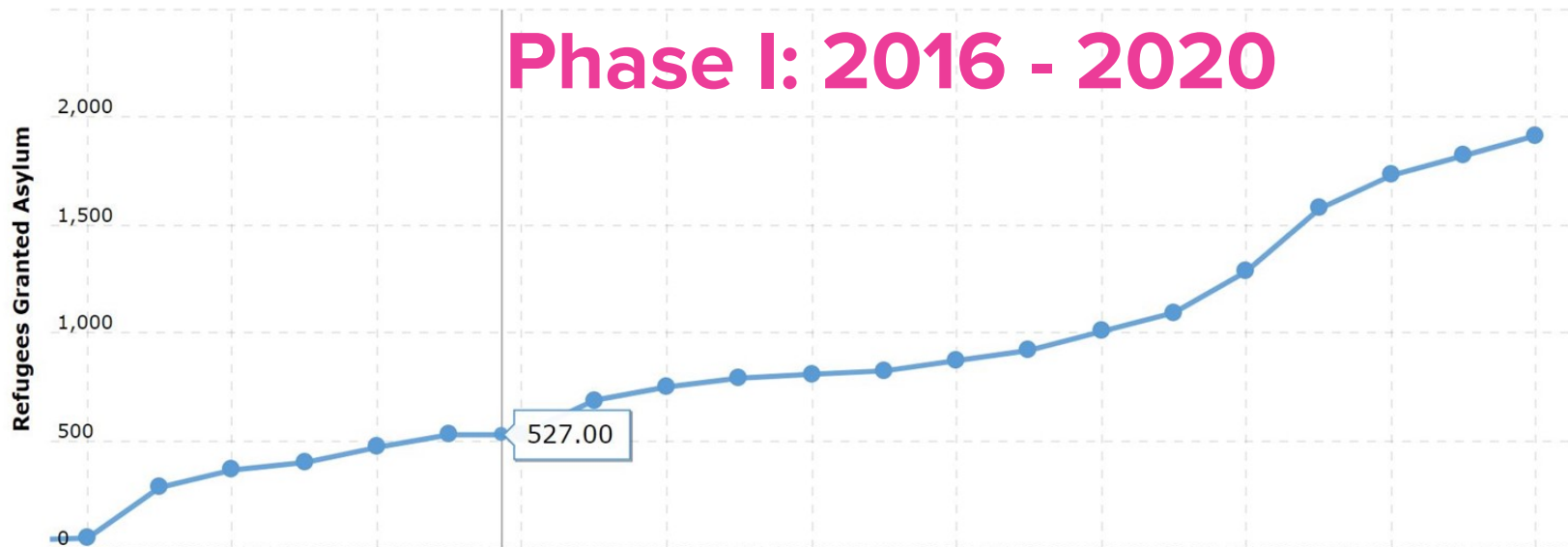


artscape

From: 2000 To: 2020

Zoom: 5Y 10Y 20Y All

## Phase I: 2016 - 2020



data.worldbank  
.org/

2016



### Characteristics and learning

- New discourse
- Mediterranean Migration Crisis and EU Media
- Few NGOs concerned at this point





Meeting  
communities  
at the  
refugee  
centers and  
outside of  
them





Theatre for  
development  
initiatives



Projects and  
summer  
camps for  
local  
teenagers  
and  
newcomers







Participatory  
community  
festivals  
(WORLD  
REFUGEE  
DAY)



## Phase II: 2021

The number of irregular arrivals through the border with Belarus by the 12th of August had reached **4 115** in 2021.

The number of irregular arrivals this year increased 55 times compared to last year and 110 times compared to 2019 (It was 37 in 2019 and 74 in 2020).

Public perceptions: in 2020, **27%** respondents indicated they wouldn't like to be **neighbours** with refugees. In 2021, this number grew up to **47%**.

2016

2021



### Characteristics and learning

- New discourse
- Mediterranean Migration Crisis and EU Media
- Few NGOs concerned at this point

### Characteristics and learning

- Incoming through Belarus-Lithuania border is depicted as a hybrid war
- International humanitarian organizations get interested
- NGOs re-focus on the humanitarian and human rights issues





Building  
communities  
through  
creative  
missions in  
refugee  
camps







Local and  
minority  
youth  
participation



## This Lithuanian-Afghan-Belarusian-Sri Lankan band has a message for Europe

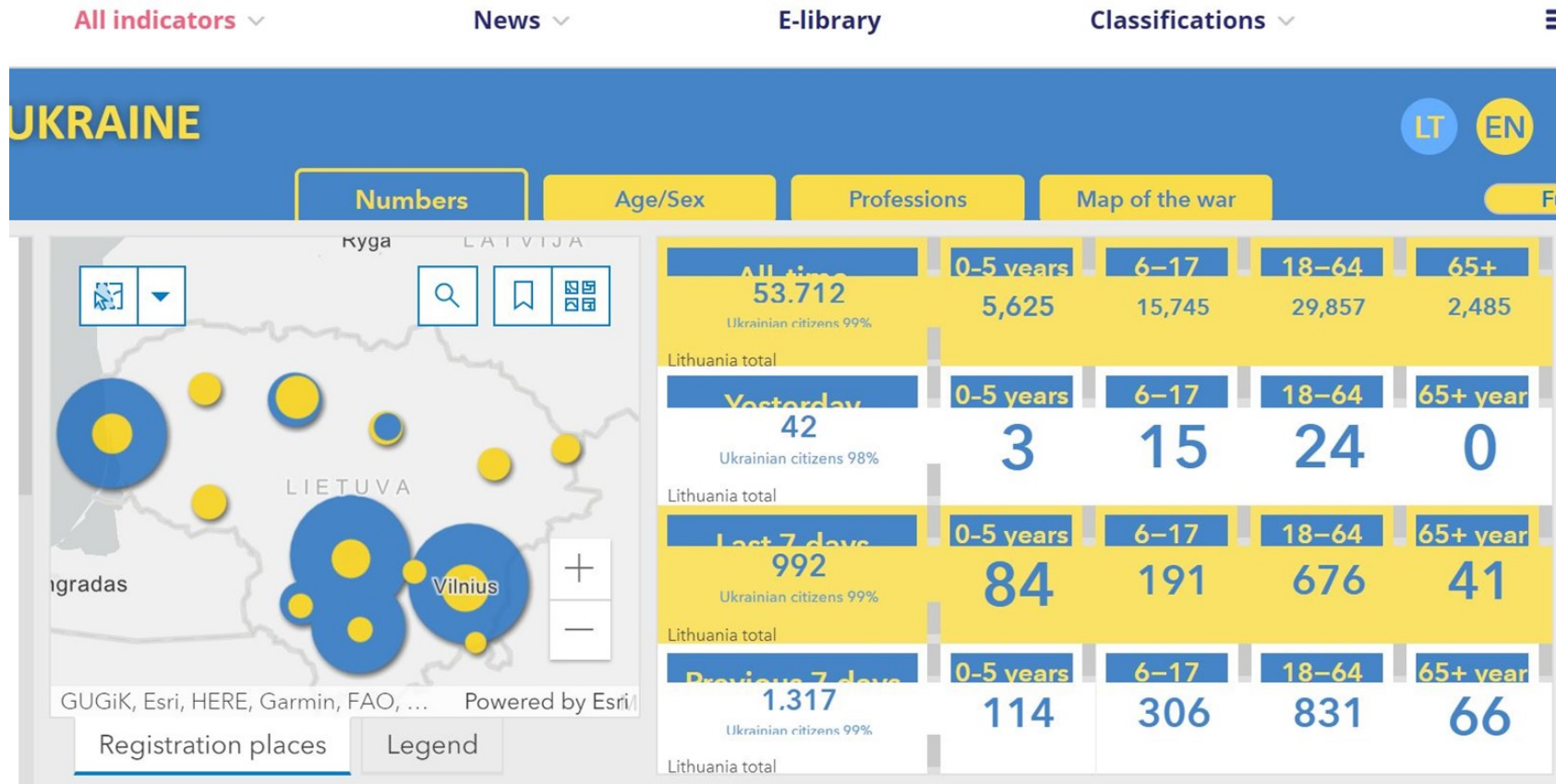


Participation  
in culture  
through  
music



Participation  
in public  
discourse

# Phase III: 2022



2016

2021

2022

### Characteristics and learning

- New discourse
- Mediterranean Migration Crisis and EU Media
- Few NGOs concerned at this point

### Characteristics and learning

- Incoming through Belarus-Lithuania border is depicted as a hybrid war
- International humanitarian organizations get interested
- NGOs re-focus on the humanitarian and human rights issues

### Characteristics and learning

- 50000 refugees from Ukraine
- Countless civil society organizations get involved
- Immediate allocation and integration
- Issue of different treatment of Refugees from Ukraine and the ones that came earlier in 2021





Participation  
of local  
communities



Culture  
ambassadors  
at culture  
institutions





Educators' recruitment  
and  
preparation  
for work with  
children from  
Ukraine





LRT.LT

**Darshanas: priklausymas vietinei bendruomenei tarpkultūrinius įgūdžius ir motyvaciją siekti ti**

LRT .lt Aktualijos Mediateka Radioteka Užsienis Diskusijos Kultūra Laisvalaikis

Kultūra 2022.05.18 12:03

## Farah: turtas, kurį visada nešiojiesi su savimi, yra patirtys, išbandymai, situacijos, kurias teko išgyventi

„Kai susitinka istorijos“

56

LRT.lt  
2022.05.18 12:03



Farah Mohammed. Akimirka iš audiovizualinės instaliacijos filmo / Stop kadras

Communication  
4 Development -  
unfolding all  
sides of  
migration topic

artscape  
artscape.it  
ausra@artscape.it