

When the victim disappear

**The National Coordinators Office at the County Administrative Board of
Stockholm**

National Coordination against Trafficking

- National Coordinators Office (CABS)
- County Coordinators against THB
- Support program
- Voluntary Safe Return programme (IOM)
- National Referral Mechanism (NRM) and TRM

Case:

- A woman is identified by police as a potential VoT and is referred in the NRM
- Close cooperation with the Regional coordinator against THB
- Temporary residence permit granted
- Secure shelter

- Referred to the AVRR-programme with IOM
- The woman wants to return
- Crise. The process is too slow for the woman
- Threats against her family in CoO
- The woman returns to CoO but shortly after return she disappears

Measures taken by authorities & stakeholders

- The county coordinator and secure shelter tries to contact her
- The investigating police in Sweden tries to contact her
- IOM in Russia tries to contact her
- Need for crossborder cooperation to support victim.
- Riskassessment?

- Questions:
- Policereport on missing person?
- If children: Yes
- Adults: Sometimes. Depending on riskassessment

Prevention measures

- Close cooperation between stakeholders
- Trust and information is the key to prevent disappearances

Contact:

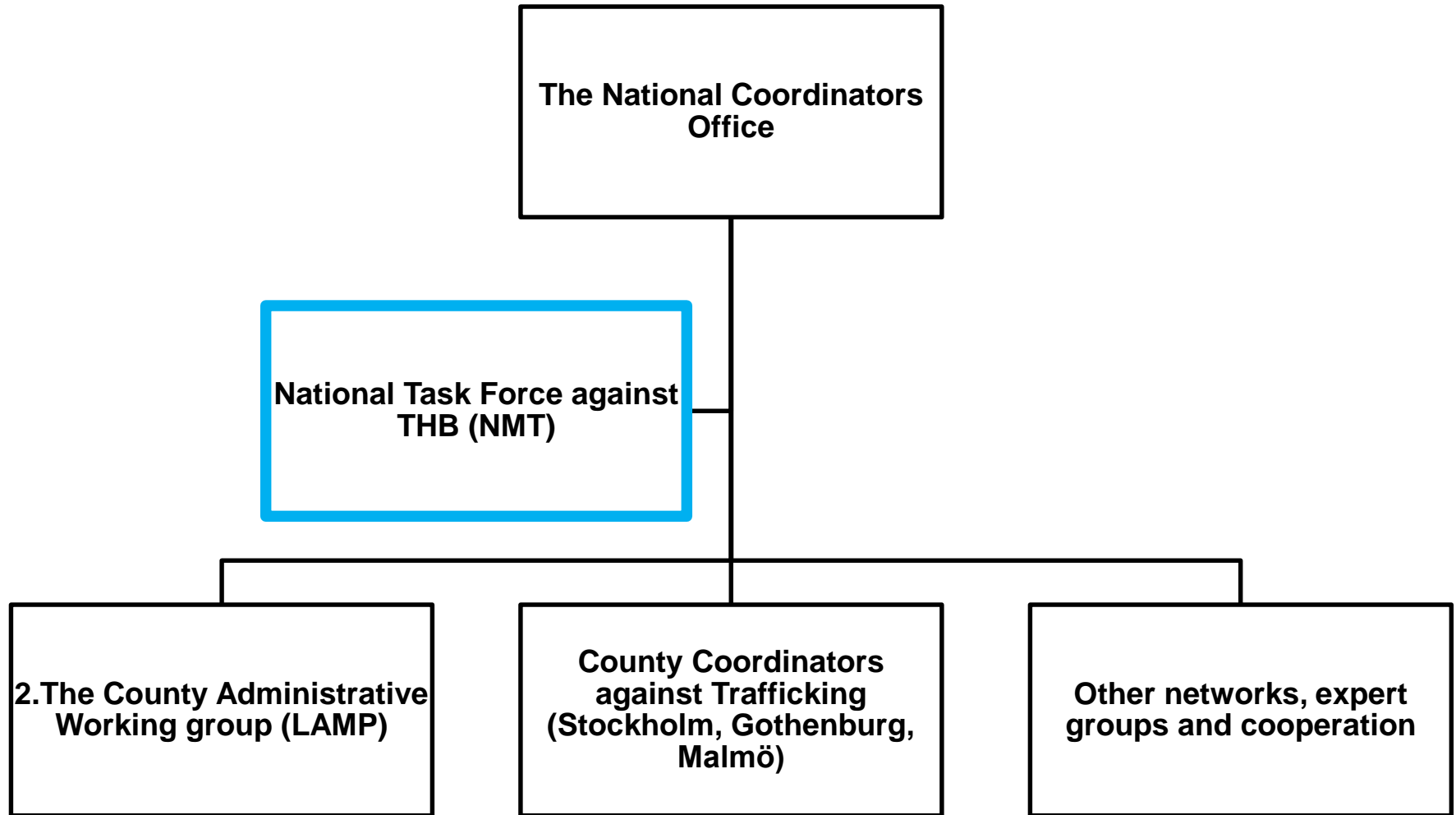
Charlotta Thorelius, +46 10 223 15 99

e-mail: charlotta.thorelius@lansstyrelsen.se



www.lansstyrelsen.se/stockholm

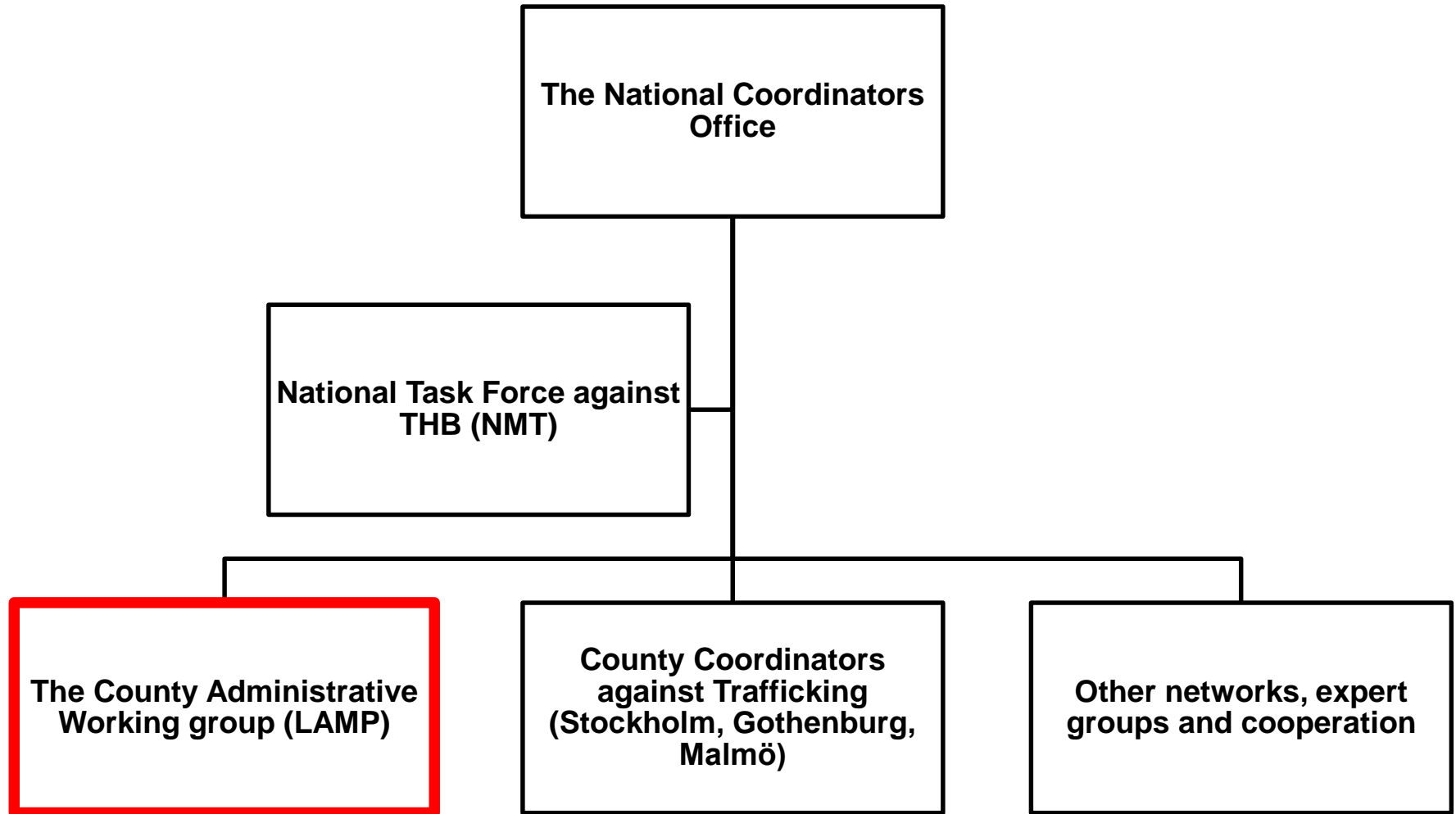
Structure



National Task Force against THB (NMT)

- Multidisciplinary Holistic approach
- Direct support in operational cases via phone, email, personal participation
- Refer operational inquiries to the appropriate authority
- Participation in trainings where the team gives operational hands-on input (local, national and international level)
- Serve as a national reference group in developing methods and training material

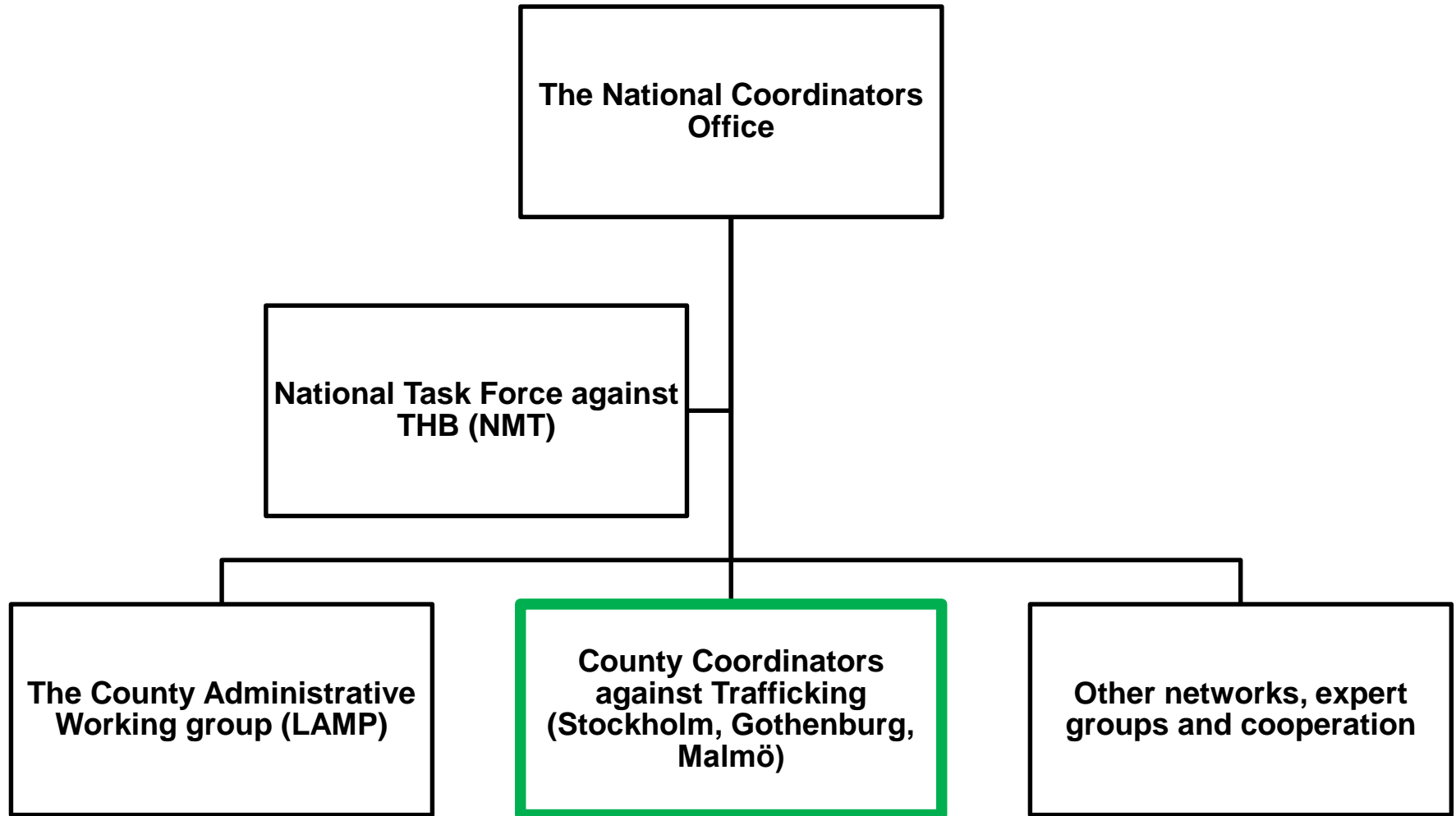
Structure



The County Administrative Working group (LAMP)

- A link between the national and local level
- Strengthen cooperation
- Increase knowledge in Municipalities
- Support police and social services locally

Structure



County Coordinators

- Successful concept
- Direct support in cases of THB
- Holistic approach
- County Coordinators represented in 6 regions

Structure

